

Pre-fold before gluing. Suggested glue order: 1 to 5

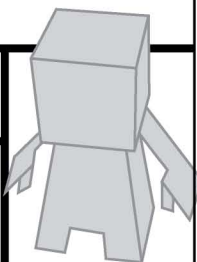
2011 THE CONTENDER SERIES

RECOMMENDATIONS: Paper: 120 gsm (32 lb) Paper | Adhesive: Elmer's White Glue | Cutting Tools: Scissors, Craft Knife | Self-Healing Cutting Mat | Tweezers

© PAPER TOY ADVENTURES 2011 THIS PAPER TOY IS NOT FOR COMMERCIAL USE

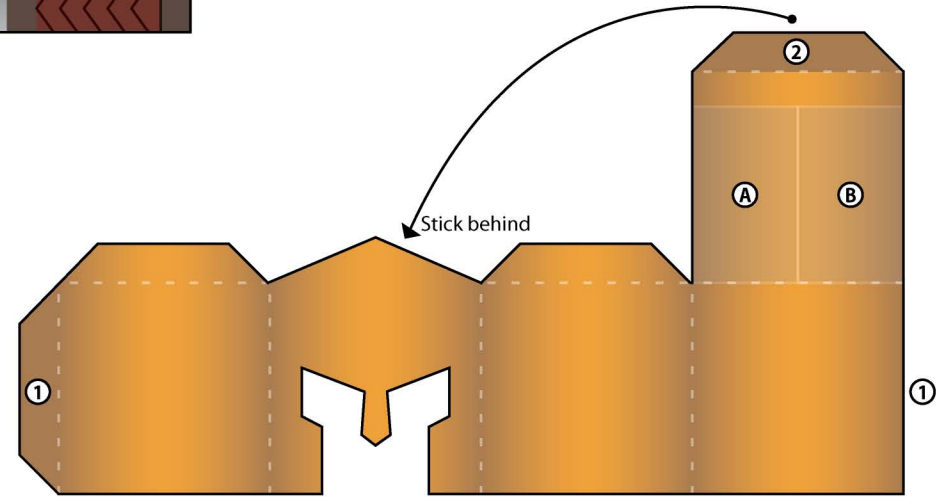
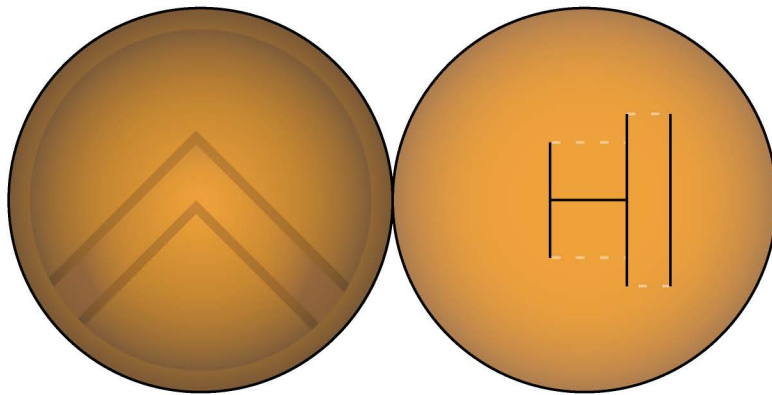
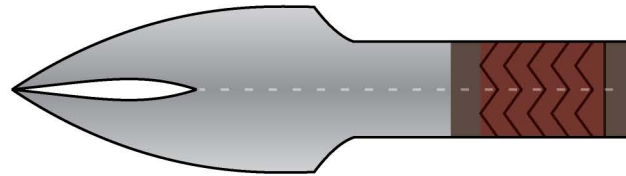
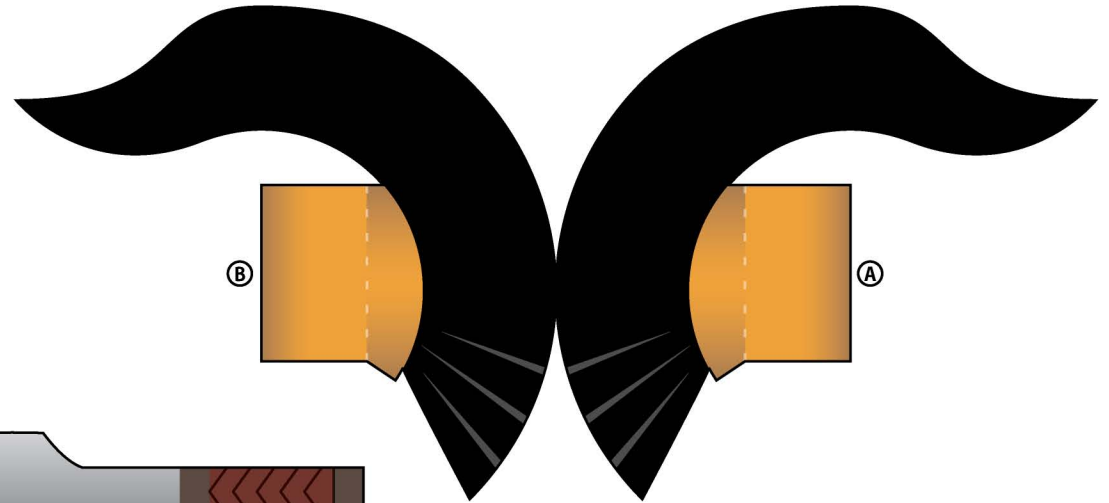
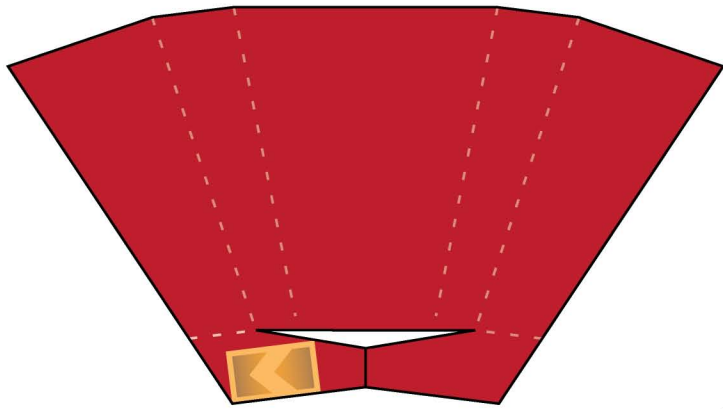
300 KING LEONIDAS

CUT ———
 FOLD - - -
 GLUE _____



⑤ Select your preferred pose for the arm.

Insert in the slit.



PAPER TOY ADVENTURES
www.papertoyadventures.com

Pre-fold before gluing. Suggested glue order: 1 to 5

2011 THE CONTENDER SERIES

300 KING LEONIDAS

RECOMMENDATIONS: Paper: 120 gsm (32 lb) Paper | Adhesive: Elmer's White Glue | Cutting Tools: Scissors, Craft Knife | Self-Healing Cutting Mat | Tweezers

© PAPER TOY ADVENTURES 2011 THIS PAPER TOY IS NOT FOR COMMERCIAL USE

CUT ———
 FOLD - - -
 GLUE ▽

