

④ Select your preferred pose for the arm. Insert in the slit.

**PAPER TOY ADVENTURES**  
[www.papertoyadventures.com](http://www.papertoyadventures.com)

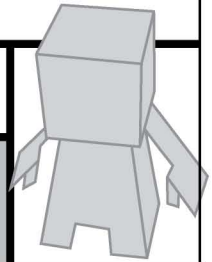
Pre-fold before gluing. Suggested glue order: 1 to 4

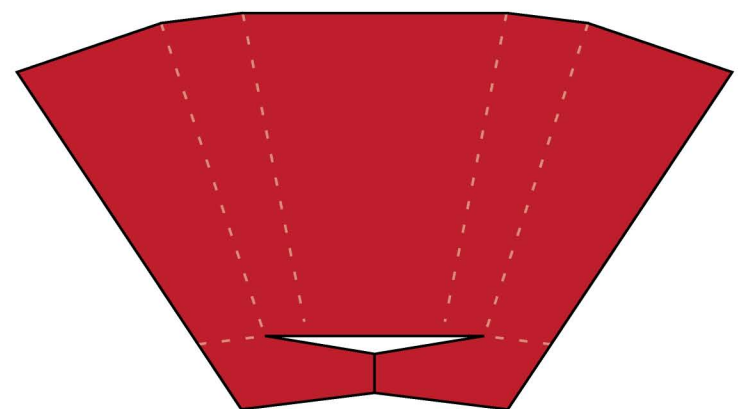
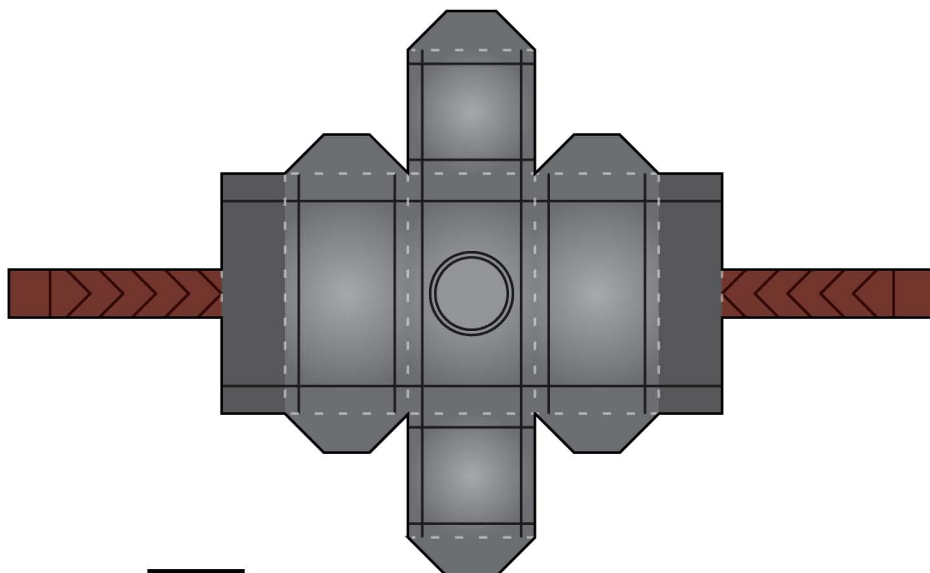
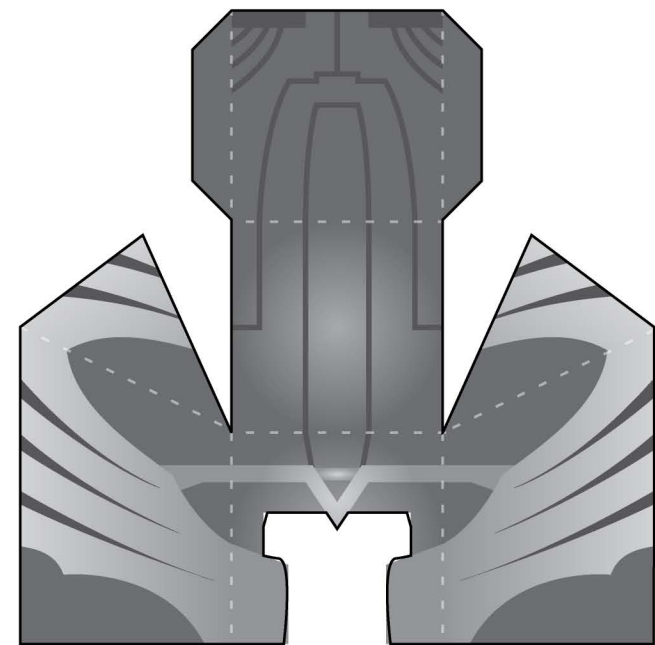
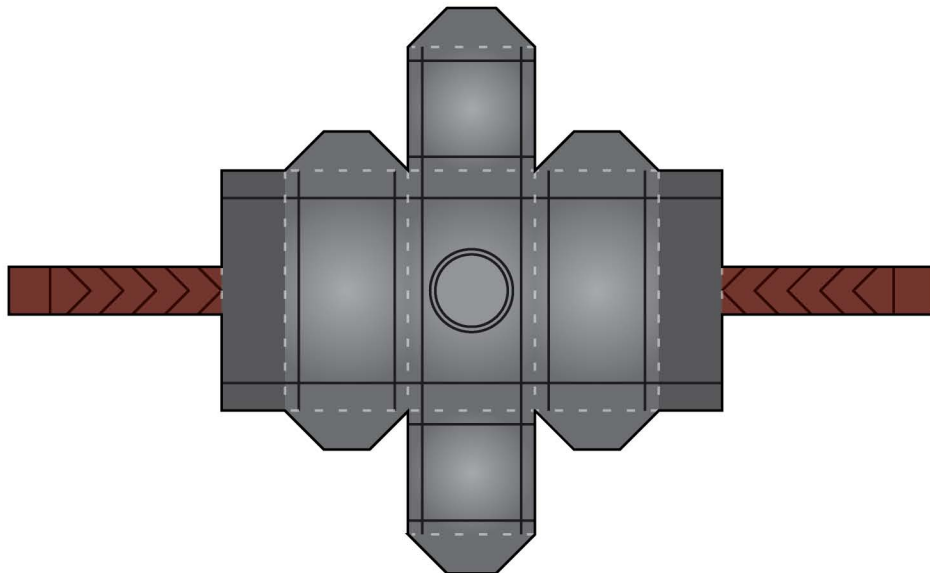
**2011 THE CONTENDER SERIES**

**RECOMMENDATIONS:** Paper: 120 gsm (32 lb) Paper | Adhesive: Elmer's White Glue | Cutting Tools: Scissors, Craft Knife | Self-Healing Cutting Mat | Tweezers

© PAPER TOY ADVENTURES 2011 THIS PAPER TOY IS NOT FOR COMMERCIAL USE

**THOR**





**PAPER TOY ADVENTURES**  
[www.papertoyadventures.com](http://www.papertoyadventures.com)

Pre-fold before gluing. Suggested glue order: 1 to 4

**2011 THE CONTENDER SERIES**

**RECOMMENDATIONS:** Paper: 120 gsm (32 lb) Paper | Adhesive: Elmer's White Glue | Cutting Tools: Scissors, Craft Knife | Self-Healing Cutting Mat | Tweezers

© PAPER TOY ADVENTURES 2011 THIS PAPER TOY IS NOT FOR COMMERCIAL USE

**THOR**

CUT	—————
FOLD	- - - - -
GLUE	▬

